

# WELCOME TO FAIRFIELD COUNTY, CT

*"Helping you discover your Fairfield County journey!"*



WHITE SILO FARM

**Elise Larrabure Girasole** revels in the exploration of the unique neighborhoods and towns within Connecticut endeavoring to empower her clients in making informed choices to discover their ideal home.



SHERMAN

NEW FAIRFIELD

BROOKFIELD

CANDLEWOOD LAKE

DANBURY

AQUILA'S NEST VINYARD

BETHEL

NEWTOWN

MONROE

RICHTER PARK GOLF COURSE

REDDING

SHELTON

RIDGEFIELD

SILVERMAN'S FARM

EASTON

TRUMBULL

TWO ROADS BREWERY

DEVIL'S DEN

WESTON

STRATFORD

WILTON

WESTPORT

BRIDGEPORT

HARTFORD HEALTHCARE AMPITHEATRE

FAIRFIELD

WESTPORT

PENFIELD PAVILION & BEACH

BARTLETT ARBORETUM & GARDENS

NEW CANAAN

NORWALK

WESTPORT

LONGSHORE

GREENWICH

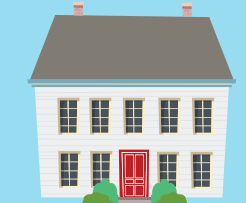
STAMFORD

DARIEN

MARITIME CENTER

GREAT CAPTAIN'S ISLAND LIGHTHOUSE

**ELG**



FAIRFIELD COUNTY LIVING

...

**BROSS CHINGAS BROSS**  
TEAM

**COLDWELL BANKER REALTY**

Elise Larrabure Girasole  
Licenced in CT as Elise Larrabure  
ELGfairfieldcountyliving.com  
@eliselarrabure





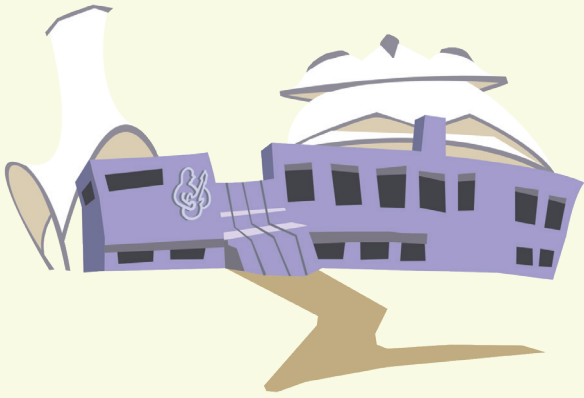
*Greenwich:* In a mere **45 minutes from the heart of New York City**, you'll find the coastal haven of Greenwich, Connecticut. Here, amid the salty breezes and shimmering waves of the Long Island Sound, adventure awaits. Imagine walking along your choice of four beautiful beaches, hearing the laughter of people enjoying sailing and swimming in the waters, and sailboats decorating the horizon. Nestled within this coastal paradise, lies the jewel of **Great Captain Island**, a 17.2-acre oasis crowned by an iconic lighthouse. Accessible by ferry from the town, this hidden gem awaits, offering idyllic picnic spots, camping grounds, and beach areas. But the allure of Greenwich extends beyond its coastal charms. Venture into the heart of the town, where streets lined with quaint **boutiques, charming eateries, and vibrant cultural hubs** promise an array of delights.

*Stamford:* With its **close proximity to New York City** via the Metro North express trains, Stamford stands as a lively hub for city dwellers seeking a suburban lifestyle without sacrificing urban accessibility. Stamford offers **stunning waterfront vistas, dynamic nightlife, delectable dining options, and rich cultural diversity**, ensuring there's always something new to explore and enjoy. The **Bartlett Arboretum & Gardens** flourish in Stamford as a natural sanctuary spanning 93 acres of picturesque open space, embodying the essence of Connecticut's landscape. Boasting champion trees, enchanting wildflower meadows, woodland trails, a charming greenhouse, and tranquil waterways, the arboretum offers a serene retreat from the fast pace of everyday life. Additionally, the arboretum hosts organized community events and engaging children's activities, fostering a sense of camaraderie and collaboration within the community.

*Norwalk:* Nestled among the whispers of history, Norwalk embraces its industrial past and maritime heritage with whimsical charm. Here, along miles of picturesque shorelines, each area shines with its own unique character, inviting exploration and discovery. Norwalk satisfies taste buds with its renowned oysters and a plethora of mouthwatering local eateries. But its reputation doesn't end there—enter the **Maritime Aquarium Center**, Norwalk's pride and joy. With 75 live exhibits and over 7,500 animals, this aquatic wonderland draws in locals, neighboring Connecticut towns, and visitors from across the nation. It's the ultimate compliment to the backdrop of Long Island Sound and beyond, promising discoveries for all who venture through its doors.



*Fairfield:* Fairfield strikes a perfect balance, blending a charming town ambiance filled with **quaint restaurants and shops, with refreshing coastal beach areas**. Renowned for its beauty and unique neighborhoods, Fairfield offers a well-rounded lifestyle that caters to all tastes and preferences. In this neighborhood, the number of dogs might surpass that of people, and their owners delight in the abundance of opportunities for adventures and play with their furry companions, particularly along the beach. Recently constructed, the **Penfield Beach Pavilion** has become a hub for beach yoga, fostering a sense of community by the shore. It also serves as a sought-after venue for weddings and various festivities. Meanwhile, **Lake Mohegan Park** is renowned for its scenic nature trails, where dog owners often pause for impromptu playdates by the lake. During the summer, visitors can enjoy designated swimming areas in the manmade freshwater lake and comfortable picnic spots, ideal for leisurely lunches.



*Bridgeport:* As a vibrant city, Bridgeport boasts **museums, universities, and the state's only zoo**. Its majestic shoreline parks, regional sports events, and thriving art scene, featuring music festivals and national performances, add to its allure. Notably, the **Hartford Healthcare Amphitheater** stands out with its distinctive structural design resembling musical notes. This award-winning venue anchors the town's cultural landscape. With its exciting events calendar, the amphitheater fosters a sense of community, drawing both locals and visitors to its dynamic offerings.

*Stratford:* Stratford seamlessly intertwines its rich historical allure with modern conveniences. Its coastal shoreline and scenic parks provide both residents and visitors with a tranquil retreat. Amidst the town's natural splendor, many vibrant attractions await. Notably, **Two Roads Brewery** calls Stratford home, serving as a lively social hub. Known for its funky graphics and iconic Volkswagen van, the brewery attracts gatherings with its inviting atmosphere. Complete with food trucks outside, a welcoming tasting room, and a relaxed vibe, it's the perfect spot to unwind and socialize.



*Newtown:* Newtown embodies a charming small-town atmosphere, renowned for its **creameries, state parks, and cozy hometown restaurants**. Familiar to many is The Newtown Bee, the town's esteemed local news and advertising outlet. Among the town's cherished destinations is **Aquila's Nest Vineyard**, a special spot where visitors can enjoy a collection of fine Connecticut wines within its climate-neutral certified 40-acre estate. Especially treasured are their famous slushy wine beverages, a summer delight sought after by both locals and visitors. It's a cherished spot for friends and family to gather and soak in the beauty of the sunset together.

*Danbury:* Danbury harbors a rich history and is home to attractions including **museums, parks, historical societies, malls, and breweries**. Notably, the **Richter Park Golf Course** stands out as a major visitor draw. Widely acclaimed as the finest in the Tri-State area, this public course offers breathtaking scenery, with water features gracing 14 out of its 18 holes. It encapsulates the tranquility and natural beauty of Connecticut, especially during the vibrant autumn foliage season.



*New Fairfield:* Nestled along the shores of **Lake Candlewood**, New Fairfield boasts natural beauty year-round. The town features recreational amenities and convenient commuting options to Westchester and lower Fairfield County. The lake provides opportunities for adventure and leisure, highlighted by the well known **Candlewood Kayak facility**. Operating during the spring and summer months, Candlewood Kayak offers kayak and paddleboard rentals, along with hosting various aquatic events throughout the peak season.



*New Canaan:* Known for its architecture, public parks and center of town with boutiques lining Main Street, New Canaan has a vibrant community and lively feel. **Waveny Park** calls New Canaan home, and is a historic property known for its landscape and architecture. With beautiful plantings and scenic spots, the park has revitalized 130 acres of open terrain, transforming it into a hub for community interaction, hosting local events, and offering leisurely activities.

*Westport:* Westport provides endless activities for its residents and visitors: gorgeous sandy beaches with facilities for grilling, **scenic walks along the Saugatuck river, art galleries, shopping outlets, indoor and outdoor performing arts venues, and plenty of dining options.** Among the town's highlights are Compo Beach, Longshore Golf and Sailing Club, Levitt Pavilion, and the esteemed Westport Country Playhouse. These institutions stand as pillars of the town's cultural scene, with both the **Playhouse and Levitt Pavilion** operating as non-profit organizations dedicated to ensuring widespread access to the performing arts across all age groups. The Playhouse aims to entertain while delving into human and societal themes, while the Levitt Pavilion has gained recognition for hosting one of the nation's longest-running outdoor festivals.



*Wilton:* Wilton emanates a sense of tranquility and spaciousness, boasting a rural ambiance characterized by **winding roads with lush trees, serene ponds, and picturesque wooded areas.** Historical architecture graces the town, reflecting its reverence for privacy among its residents. Notable attractions in Wilton include the Norwalk River Valley Trail, the longest trail in Fairfield County, and the **Weir Farm National Historic Site.** The National Park for Art offers residents and visitors the chance to visit the home and studio of J. Alden Weir, a beloved American Impressionist, and to wander through the same inspiring landscapes that once inspired world-class artists.

*Easton:* Nestled between Fairfield and Trumbull, Easton encompasses a quaint rural atmosphere. In autumn, it draws in visitors in pursuit of pumpkin farms, while winter calls for those in search of the perfect Christmas tree from its tree farms. **Indian Ledge Park** holds a special place in the hearts of residents, offering expansive soccer and lacrosse fields, a community playground complete with picnic spots, bocce courts, a track, a sledding hill, dog park, and a vibrant youth center. This park epitomizes the welcoming, lively, and nature-loving essence of the town.

*Redding:* Redding is an idyllic town with a storied past, blending a delightful ambiance with enjoyable pursuits for its residents. Among its treasures is **Putnam Memorial State Park**, Connecticut's oldest park, cherished by many. With origins dating back to the Revolutionary War encampment, the park retains remnants of its historical significance to this day. Cyclists and pedestrians are drawn to its scenic one-mile loop, while iconic statues, a gazebo and recreational area offer opportunities for playing, walking, fishing, grilling, and picnics, ensuring there's something for everyone to enjoy.



*Weston:* Known for its outdoor expanses, sophisticated yet rustic charm, and thriving arts scene, Weston stands as a cherished Connecticut gem, embracing tranquility and exploration. Its lush, rolling hills offer a secluded haven adored by residents and visitors seeking solace and natural beauty. At the heart of it all lies **Devil's Den Nature Preserve**, a sanctuary for adventure and the largest of its kind in Connecticut. Here, enthusiasts revel in a variety of outdoor activities—hiking, biking, running, and leisurely strolls—amidst a neighborly atmosphere where friendly exchanges abound along the trails.

*Ridgefield:* Ridgefield is celebrated for its scenic Main Street, distinguished by its meticulous design and adorned with delightful homes and structures. With a diverse cultural landscape and welcoming ambiance, Ridgefield is inviting for visitors and residents. The town is home to the **Aldrich Contemporary Art Museum**, one of the nation's oldest institutions dedicated to contemporary art. Offering collaborative and enlightening programs, the museum showcases thought-provoking exhibitions that push the boundaries of artistic vision.

*Trumbull:* Trumbull captures the essence of a New England small-town ambiance, while also hosting numerous retail stores and malls. A central hub of community life is found in **Indian Ledge Park and Playground**, where children play, families gather for picnics, and dogs roam freely. With baseball and softball fields, a Bocce court, and a communal playground, this park offers an ideal setting for family enjoyment and recreation.

*Shelton:* Shelton is home to great parks, a charming downtown, and an array of delectable restaurants, fostering a tight-knit community atmosphere. Among its renowned attractions is **Cedar Mill & Orchard**, a remarkable orchard open from August until Christmas Eve, emitting the irresistible aroma of apple pie. The orchard offers entertainment for all ages, with children relishing the opportunity to pick their preferred apples and adults savoring freshly brewed hard cider. Not to be overlooked are their famous apple cider donuts, an absolute must-try treat.

*Brookfield:* Brookfield encompasses farmlands, forests with diverse wildlife, and serene lakes bustling with fish. It exudes natural beauty and stands as a cherished New England treasure. Brookfield residents hold a deep affection for **Candlewood Lake**, seizing every opportunity to engage in its multitude of aquatic activities, including jet skiing, boating, water skiing, tubing, fishing, swimming, canoeing and hiking and camping along the waterways. The preservation of the lake is paramount to the community, as it holds a special place in their daily lives and recreational pursuits.

*Sherman:* Situated along the Housatonic Valley, the town of Sherman graces Fairfield County as its northernmost gem. Celebrated for its hallmark attraction, **White Silo Farm**, a charming family-owned boutique winery, Sherman offers a delightful retreat. From April to December, White Silo Farm invites guests for wine tastings, complemented by charcuterie, pastries, and camaraderie among friends and family. Beyond tastings, the farm serves as a versatile venue, accommodating private events for all occasions and playing host to public festivals and pop-up dinners highlighting seasonal fruits and vegetables. This intimate haven imbues the town with a vibrant, celebratory spirit.



---

*I am so appreciative for this team of true poetic artists blending talents of passion.  
XOX Elise*

Abril Aello, my Nickelodeon illustrative superstar  
Sydney Girasole, my master of written expression  
Renee Kapteina, for overseeing with amazing creative vision



## RELOCATING MADE EASY

I offer a unique concierge experience that assists in discovering communities and navigating the market, ultimately leading to a trusted exploration tailored to your priorities. My aim is to facilitate a smooth transition as you embark on the journey to find your ideal home, ensuring it's an informative and stress-free process.



## ELEVATING YOUR EXPERIENCE

I am patient and understand the process of searching for a new home. I enjoy developing a trusted and communicative relationship with my clients by exploring all possibilities that may fulfill my clients needs

No pressure - if you are tight on time or not yet ready for a purchase, I am able to help find a suitable rental

Our team has both the accessibility and extensive experience to effectively navigate across a wide spectrum of price ranges. Being the #1 Coldwell Banker Real Estate Team in CT positions us to provide great results, no matter where in Fairfield County you'd like to live

I am able to recommended a list of moving companies and additional home services to ease your transition

I am happy to introduce and familiarize you with the charming towns of Fairfield County and the wonderful culture, restaurants, local happenings and activities that are available

Being that preparation is important, I can provide you with options for reliable and trustworthy mortgage lenders and attorneys

Do you have a home to sell? I can guide you in exploring the pathways to a successful sale, ensuring you acheive your goals with clarity and confidence

Leveraging my business experience, negotiation skills and the unwavering support of my exceptional team in collaboration with the Coldwell Broker Network, I am fully poised to effortlessly connect you to your upcoming and thrilling lifestyle transition



Elise Larrabure Girasole



# CLIENT TESTIMONIALS

- We recently had the pleasure of working with Elise in the Westport and Fairfield, CT market and cannot recommend her highly enough. From the start, Elise's deep connections in the local real estate community proved invaluable in our home search. Thanks to her extensive network, we were able to find a fantastic house that perfectly met our needs. Elise is knowledgeable of the market, especially during these uncertain times, which was impressive and reassuring. She provided us with insightful information that helped us navigate complexities of the current RE environment with confidence. One of Elise's standout qualities is her keen eye for interior design. She has an incredible ability to help clients visualize themselves in a space, making it easier to see the potential and possibilities of each property. Additionally, her understanding of value in the area ensured we found a house that was both beautiful and a smart investment. Elise's support extended beyond just finding the right house; she also connected us with excellent legal and financial services in the area. Her recommendations were spot-on and made the entire process more efficient. Thank you, Elise, for helping us find the perfect home! [Sara & Will]

- Elise, you truly drove this journey from start to finish. Your efforts have garnered well-deserved recognition, and I must say, they were fantastic! Your dedication and professionalism set an unparalleled standard, exemplifying the core values of your team and company with the utmost integrity and commitment. Your invaluable role in meticulously orchestrating all essential components for a seamlessly executed process, even in the midst of my overseas travel, did not go unnoticed. My sincere appreciation and hearty cheers to you! [Vinny M.]

- Elise transformed what I expected to be a daunting process into a seamless, comfortable journey. In the midst of an incredibly competitive buyers market, Elise's expertise shone through. From the very beginning, Elise grasped my goals, showing me how homeownership could be a reality. She took the time to break down monthlies, highlighting how investing in a home would ultimately be a wiser financial decision than renting. Elise's confidence and knowledge were evident in every step of the process. When faced with intense bidding wars, her negotiation skills proved to be second to none, ensuring that I secured the perfect home for the right price. Her ability to explain the long-term benefits of ownership gave me a sense of security and empowerment. My apartment is perfect, and I owe it all to Elise's exceptional guidance throughout this first time home-buying journey. [Matt C.]

- Elise and Maya are the best! We are so thankful for their efforts in helping us find our perfect first home here in CT. When my partner and I moved here from NYC we were very unfamiliar with the area. Elise and Maya are incredibly knowledgeable about the different neighborhoods we were interested in. They took time to show us not only homes but local establishments and town centers so we could get a feeling for the uniqueness of each area. We especially appreciated their responsiveness and flexibility with their schedules throughout our interstate move. Elise and Maya made the daunting task of moving to a new state smooth and truly enjoyable. Thank you so much! We are so happy here! [Mia T.]

- I recently purchased a 2 family townhome in the Clinton Hill section of Brooklyn thru Elise Larrabure. We have seen many properties, and as I embarked on my journey, through deciding on neighborhoods with good upside, thru dwellings in all different shapes, sizes and conditions, Elise has been extremely helpful, supportive and protective throughout. From researching renovation and design options, environmental issues to negotiating strategy, her service enabled me to purchase a property smoothly, and with no buyer's remorse. Elise, thanks for all that you do. Anyone would be lucky to have you leading the charge. [George F.]

- Elise, I just wanted to take the time to thank you so much for helping us find our son a great apartment in New York City. It can be so daunting and overwhelming to try and find things on your own! I really appreciate all the hard work you put into the search. You really took the time to research all different areas, and, being respectful of our budget, found him a GREAT apartment! He's extremely happy! [Janet w.]



*Elise Larrabure Girasole*

**ELG**



FAIRFIELD COUNTY LIVING



**BROSS CHINGAS BROSS**

TEAM



**COLDWELL BANKER | REALTY**

*Here to help you discover your Fairfield County journey!*

Call or Text me today! (203) 257-6312

Elise.Larrabure@cbrealty.com | ELGfairfieldcountyliving.com